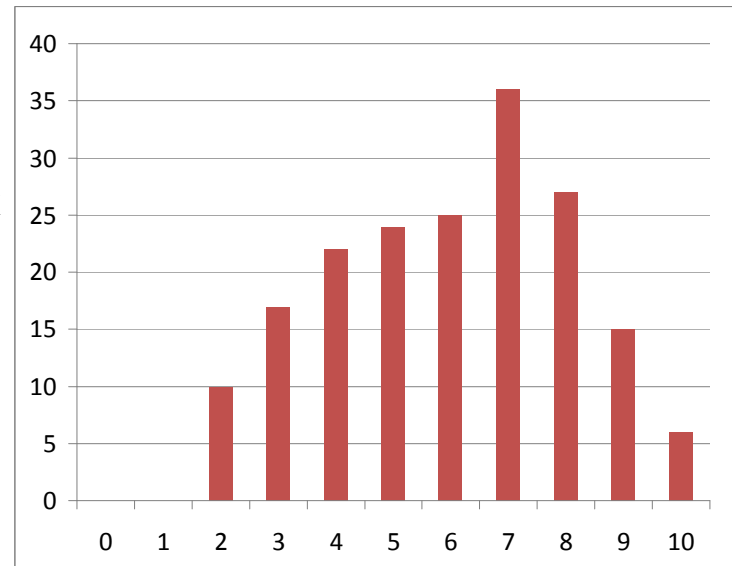


scangrade v. 1.2 May 12 2012 9:17:09
 graded on Sat 5/12/2012 23:13:34

key A DDCBA EABDD
 key B CEEAB ECCCE
 key C EABBD CABCD
 key D DADEA CBBCA

Tform	Qcode	Order	Raw Score	% Score	Responses	Scoring
B	102	3	5	50	BECAB EBACA	XcXcc cXXcX
A	104	31	8	80	DDCDA EABDE	cccXc ccccX
D	105	118	7	70	CEDEA CBACA	XXccc ccXcc
B	109	112	5	50	CBDAD EBECE	cXXcX cXXcc
B	112	137	7	70	CCADB ECCCE	cXXXc cccc
C	114	156	3	30	CDEBD BADAA	XXXcc XcXXX
A	115	61	3	30	CABEA DACDB	XXXXc XcXcX
D	117	157	4	40	BADAA CDABD	XccXc cXXXX
A	120	1	4	40	CBCDB AEBDD	XXcXX XXccc
D	124	129	7	70	DBAAA CBBCA	cXXXc cccc
D	125	99	7	70	DCDAA ABBCA	cXcXc Xcccc
A	127	50	6	60	DACDA EAEDC	cXcXc ccXcX
B	128	28	3	30	BDBDC BCCEE	XXXXX XccXc
D	129	101	8	80	AADAA CBBCA	XccXc cccc
D	130	135	7	70	DBAAA CBBCA	cXXXc cccc
C	131	171	10	100	EABBD CABCD	cccc cccc
B	132	115	5	50	ADCAB DCCBE	XXXcc XccXc
A	134	160	7	70	DDADB EABDD	ccXXX cccc
B	135	91	6	60	CCEAC EBECE	cXccX cXXcc
D	138	96	9	90	BADEA CBBCA	Xcccc cccc
B	139	123	7	70	CEBDB ECACE	ccXXc ccXcc
C	140	44	5	50	EBABD BBBCE	cXXcc XXccX
C	141	119	5	50	ABBAD CABEA	XXcXc cccXX
D	143	148	9	90	DADAA CBBCA	cccXc cccc
B	144	165	6	60	CECAD ECACA	ccXcX ccXcX
B	146	43	8	80	CECAB ECCCA	ccXcc ccccX
A	150	174	5	40	DCCBB CADDA	cXccX XcXcX penalty
D	152	176	2	20	BDEAB BBBAD	XXXXX XccXX
C	154	11	7	70	ECBBB CBBBD	cXccc cXcXc
D	155	151	2	20	BAAAD DDBAD	XcXXX XXcXX

B	158	95	7	70	CCBAB DCCCE	cXXcc Xcccc
D	159	7	8	80	DADDA DBBCA	cccXc Xcccc
D	163	108	9	90	DADDA CBBCA	cccXc ccccc
A	165	16	4	40	BDCEA ADADB	XccXc XXXcX
B	171	83	6	60	CECAD ECAEE	ccXcX ccXXc
C	172	33	8	80	ABBBB CABCD	XXccc ccccc
C	174	132	2	20	ABEAD BACAA	XXXXc XcXXX
B	176	66	5	50	CECDD ECACA	ccXXX ccXcX
D	183	38	6	60	DABDA DBBCD	ccXXc XcccX
A	184	49	4	40	DCCDB CAEDE	cXcXX XcXcX
D	186	34	8	80	DADAD CBBCA	cccXX ccccc
A	190	53	10	100	DDCBA EABDD	ccccc ccccc
D	192	81	5	50	DBCDA ABBA	cXXXc XccXc
C	195	104	6	60	EBEBD CBBBD	cXXcc cXcXc
B	196	60	5	50	BCAE DCCCB	cXXcX XcccX
B	198	170	3	30	EBEBB DACEA	XXcXc XXcXX
D	199	179	10	100	DADEA CBBCA	ccccc ccccc
D	202	127	4	40	CDDCD BBBCD	XXcXX XcccX
B	203	122	7	70	CECDD ECCCE	ccXXX ccccc
C	205	36	6	60	EBBBD CAEE	cXccc ccXXX
A	206	20	8	80	DACDA EABDD	cXcXc ccccc
A	207	2	3	30	DDEDB DEBAC	ccXXX XXcXX
B	212	13	5	50	CCCAD DBCCE	cXXcX XXccc
C	213	40	8	80	EABBD CCBCA	ccccc cXccX
A	215	126	7	70	DDCDA EAEDC	cccXc ccXcX
A	217	5	4	40	CACAB DABDA	XXcXX XcccX
B	218	100	4	40	BECAC DACCA	XcXcX XXccX
D	219	131	4	40	BAEAB BBBA	XcXXX XccXc
C	220	23	4	40	EDBCD BEECB	cXcXc XXXcX
C	222	57	5	50	EBBAD CACEE	cXcXc ccXXX
D	223	110	8	80	DADDA CCBCA	cccXc cXccc
D	231	19	6	60	DADDD CBBAD	cccXX cccXX
C	234	65	8	80	EAEBD CABCA	ccXcc ccccX
B	236	42	3	30	BDDCD DECCE	XXXXX XXccc
C	239	97	8	80	ABBBB CABCD	XXccc ccccc
A	240	71	9	90	DDCAA EABDD	cccXc ccccc
C	241	15	8	80	EBBBB CABCA	cXccc ccccX



A	242	111	2	20	AECAB CEDDE	XXcXX XXXcX	
D	246	64	7	70	DAAAA CBBBD	ccXXc ccccX	
D	248	87	5	50	BADAB ABBAA	XccXX XccXc	
B	249	24	8	80	CEEAC EACCE	ccccX cXccc	
D	250	51	6	60	DAEAE CBBAA	ccXXX cccXc	
B	254	141	6	60	CDCBD ECCCE	cXXXX ccccc	
C	257	94	6	60	EBEBD BABBD	cXXcc XccXc	
A	262	39	5	50	CDBCA EAEDE	XcXXc ccXcX	
B	265	4	7	70	CECAD ECCCC	ccXcX ccccX	
D	268	72	3	30	BECDC BBBA	XXXXX XccXc	
A	270	10	10	100	DDCBA EABDD	cccc cccc	
C	271	164	8	80	EBBBD CABBD	cXccc cccXc	
B	274	18	8	80	CEDAB ECCCA	ccXcc ccccX	
C	275	89	6	60	ABBBD CABBA	XXccc cccXX	
A	276	78	7	70	-DBBA EABDC	XcXcc ccccX	
C	278	140	7	70	EBEBD CABAD	cXXcc cccXc	
C	279	143	4	40	ECBED DDECC	cXcXc XXXcX	
A	285	69	3	30	EDCEB ACDDC	XccXX XXXcX	
A	286	145	6	60	DDCDA CADD	cccXc XcXcX	
A	287	113	5	40	DBCDD CEBDD	cXcXX XXccc	penalty
C	288	173	3	30	CBBAD BDEED	XXcXc XXXXc	
C	289	93	4	40	EEBBD BECBA	cXccc XXXXX	
B	292	47	6	60	CBDAD EDCCE	cXXcX cXccc	
C	293	105	10	100	EABBD CABCD	cccc cccc	
C	295	74	6	60	ABBBD CABBA	XXccc cccXX	
B	296	178	3	30	CDCBE DCECA	cXXXX XcXcX	
A	297	62	7	70	CDCAA EEBDD	XccXc cXccc	
A	301	175	4	40	CDCDB ADEDD	XccXX XXXcc	
D	302	181	3	30	ADEAB BBBA	XXXXX XccXc	
C	303	134	5	50	CBBBD CBBBD	XXcXc cXcXc	
B	307	70	5	50	CDCCB EBCCB	cXXXc cXccX	
C	311	154	8	80	EBBBD CABCB	cXccc ccccX	
C	317	142	6	60	ACBBD BABBD	XXccc XccXc	
B	318	32	6	60	CCADB ECACE	cXXXc ccXcc	
D	319	52	5	50	DABAE BABCA	ccXXX XXccc	
B	320	9	4	40	BBBDD DCCCE	XXXXX Xccc	
C	321	116	4	40	AEEBC EABAD	XXXcX XccXc	

D	324	37	4	40	DECCB CCBCD	cXXXX cXccX
B	329	109	5	50	CCCDD ECCCA	cXXXX ccccX
A	334	22	8	80	DDEBA EABDB	ccXcc ccccX
A	335	75	6	60	CDCDA EEBDC	XccXc cXccX
B	337	67	3	30	BDCAC AECCB	XXXcX XXccX
B	340	146	8	80	EEEAB ECCCA	Xcccc ccccX
A	341	82	9	90	DDCDA EABDD	cccXc ccccc
D	342	102	10	100	DADEA CBBCA	cccc ccccc
C	343	56	2	20	ABEAB ADBED	XXXXX XXcXc
C	345	124	8	80	EBBBD BABCD	cXccc Xcccc
A	348	86	7	70	DACAA AABDD	cXcXc Xcccc
A	354	63	9	90	DDCDA EABDD	cccXc ccccc
C	356	153	7	70	BABBD CEECD	Xcccc cXXcc
C	358	58	4	40	EBEED CBBA	cXXXc cXcXX
C	363	133	6	60	EBEED CACCD	cXXXc ccXcc
B	364	114	4	40	CECAE DAEED	ccXcX XXXXc
B	366	120	6	60	CCDAC DCCCE	cXXcX Xcccc
D	368	21	6	60	DAADA ABBAA	ccXXc XccXc
A	371	103	9	90	DDCBB EABDD	cccX ccccc
D	372	138	3	30	CAA-B DABEA	XcXXX XXcXc
A	373	45	3	30	DDBAC AEDDC	ccXXX XXXcX
C	374	172	2	20	BDBAC BBCBD	XXcXX XXXXc
B	375	182	7	70	BBCAB ECCCE	XXXcc ccccc
D	376	125	7	70	DADAE CDBCA	cccXX cXccc
A	377	55	9	90	DDCDA EABDD	cccXc ccccc
D	380	166	2	20	ADCEA BCADD	XXXcc XXXXX
D	385	117	8	80	DADAA CBBA	cccXc cccXc
A	387	68	9	90	DDCDA EABDD	cccXc ccccc
B	391	130	7	70	CCBDB ECCCE	cXXXc ccccc
A	392	59	7	70	DDCDA AABDC	cccXc XcccX
C	393	6	4	40	ECBAD BBCDD	cXcXc XXXXc
C	397	162	8	80	EBBBD CABBD	cXccc cccXc
A	400	17	6	60	DDCDA EEDDE	cccXc cXXcX
B	401	54	5	50	EBEDB EACCB	XXcXc cXccX
B	404	106	8	80	CECAB EECCE	ccXcc cXccc
B	407	92	7	70	CDBAB ECCCA	cXXcc ccccX
D	408	8	8	80	DADAD CBBCA	cccXX ccccc

B	410	41	3	30	ADDBE EBCCA	XXXXX cXccX
A	412	144	9	90	DDCCA EABDD	cccXc ccccc
D	414	48	7	70	DBDAE CBBCA	cXcXX ccccc
C	416	161	5	50	CBCCD CABAD	XXXXc cccXc
A	419	80	7	70	DDDAE EABDC	ccXXc ccccX
D	420	84	8	80	DADAE CBBCA	cccXX ccccc
D	421	149	4	40	BEEEA DDBCD	XXXcc XXccX
A	423	180	2	20	DBDCC ADDBD	cXXXX XXXXc
A	424	79	6	60	DCCDA EADDC	cXcXc ccXcX
C	426	25	6	60	EBBBD BBBCA	cXccc XXccX
C	428	121	5	50	CBEEED CCBCD	XXXXc cXccc
A	431	73	7	70	DBCBA EAEDB	cXccc ccXcX
B	432	14	8	80	CECDB ECCCE	ccXXc ccccc
D	433	46	7	70	DCCAA CBBCA	cXXXc ccccc
A	434	147	7	70	DDCDB EABDC	cccXX ccccX
A	435	136	9	90	DDCDA EABDD	cccXc ccccc
A	437	158	3	30	ADEEB DADDC	XcXXX XcXcX
C	439	88	4	40	CBBD CBEEA	XXccc cXXXX
C	440	77	7	70	BCBBD CABBD	XXccc cccXc
D	441	139	6	60	DADCD DBBCD	cccXX XcccX
C	444	107	4	40	DAEBD BEEBD	XcXcc XXXXc
B	448	90	7	70	CECAD ECCCA	ccXcX ccccX
D	450	150	9	90	DADEA CBBA	cccc cccXc
D	452	98	7	70	BADAA CBBBA	XccXc cccXc
B	453	35	8	80	CEBAB DCCCE	ccXcc Xcccc
C	454	76	4	40	CEBCD CBAAD	XXcXc cXXXc
C	456	29	5	50	EBECD CAEBD	cXXXc ccXXc
A	464	12	2	20	BCDAC DAABD	XXXXX XcXXc
D	465	128	7	70	BADCE CBBCA	XccXX ccccc
C	468	85	9	90	EABBD CABCA	cccc ccccX
A	475	26	3	30	CABBA ECEEC	XXXcc cXXXX
C	478	155	5	50	CBEBD BABBD	XXXcc XccXc
A	480	163	8	80	DDADA EABDD	ccXXc ccccc
B	483	168	9	90	CECAB ECCCE	ccXcc ccccc
D	490	152	7	70	DADBA CBACD	cccXc ccXcX
C	491	167	5	50	BEEBD CEABD	XXXcc cXcXc
B	493	159	7	70	CECAD ECCCA	ccXcX ccccX

B	494	30	9	90	CCEAB ECCCE	cXccc ccccc
D	495	169	7	70	DBDAA CBBCD	cXcXc ccccX
C	498	27	7	70	EDBAD CDBCD	cXcXc cXccc
B	500	177	2	20	BDDAC BEECD	XXXcX XXXcX

	n	avg	dev	min	max
Form A	45	61.3	23.7	20	100
Form B	45	58.4	18	20	90
Form C	48	57.7	19.9	20	100
Form D	44	62.7	21.5	20	100
Aggregate	182	60	21	20	100

Form A Q:A	Correct	None	A	B	C	D	E
Q1 :D	31: 68.9%	1	2	2	8	31	1
Q2 :D	30: 66.7%	0	6	4	4	30	1
Q3 :C	32: 71.1%	0	2	5	32	3	3
Q4 :B	8: 17.8%	0	8	8	3	22	4
Q5 :A	29: 64.4%	0	29	12	3	1	0
Q6 :E	27: 60.0%	0	8	0	5	5	27
Q7 :A	32: 71.1%	0	32	0	2	3	8
Q8 :B	26: 57.8%	0	2	26	1	9	7
Q9 :D	41: 91.1%	0	1	2	0	41	1
Q10:D	20: 44.4%	0	2	4	14	20	5

Form B Q:A	Correct	None	A	B	C	D	E
Q1 :C	32: 71.1%	0	2	8	32	0	3
Q2 :E	19: 42.2%	0	0	7	9	10	19
Q3 :E	6: 13.3%	0	0	7	25	7	6
Q4 :A	28: 62.2%	0	28	4	2	11	0
Q5 :B	20: 44.4%	0	0	20	7	14	4
Q6 :E	30: 66.7%	0	1	2	0	12	30
Q7 :C	29: 64.4%	0	5	6	29	1	4
Q8 :C	34: 75.6%	0	6	0	34	0	5
Q9 :C	40: 88.9%	0	0	1	40	0	4
Q10:E	25: 55.6%	0	14	5	0	1	25

Form C Q:A	Correct	None	A	B	C	D	E
Q1 :E	26: 54.2%	0	9	4	8	1	26

Q2 :A	7: 14.6%	0	7	28	5	4	4
Q3 :B	31: 64.6%	0	1	31	1	0	15
Q4 :B	31: 64.6%	0	8	31	5	0	4
Q5 :D	45: 93.8%	0	0	1	2	45	0
Q6 :C	31: 64.6%	0	1	14	31	1	1
Q7 :A	27: 56.2%	0	27	10	2	4	5
Q8 :B	32: 66.7%	0	2	32	6	1	7
Q9 :C	18: 37.5%	0	7	16	18	1	6
Q10:D	29: 60.4%	0	13	2	1	29	3

Form D Q:A	Correct	None	A	B	C	D	E
Q1 :D	28: 63.6%	0	3	10	3	28	0
Q2 :A	29: 65.9%	0	29	5	2	4	4
Q3 :D	26: 59.1%	0	6	2	5	26	5
Q4 :E	7: 15.9%	1	23	1	4	8	7
Q5 :A	25: 56.8%	0	25	6	1	6	6
Q6 :C	27: 61.4%	0	4	7	27	6	0
Q7 :B	35: 79.5%	0	2	35	3	4	0
Q8 :B	40: 90.9%	0	4	40	0	0	0
Q9 :C	28: 63.6%	0	12	2	28	1	1
Q10:A	31: 70.5%	0	31	0	0	13	0