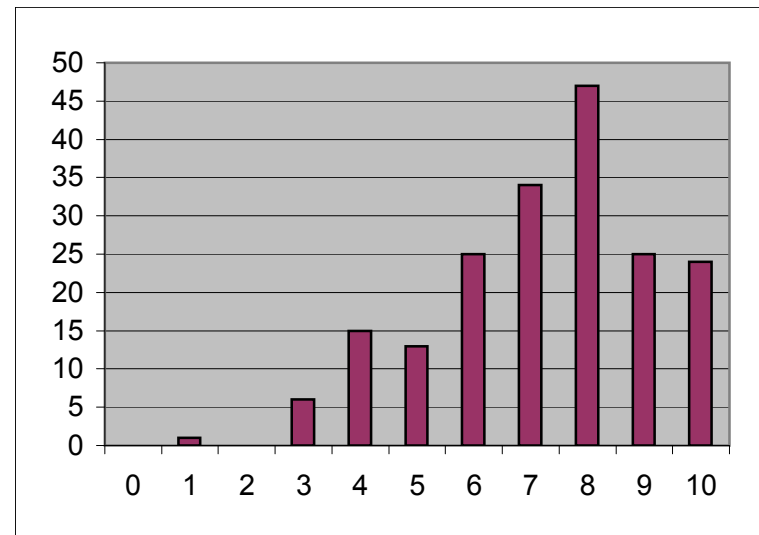


A CACBA ACCCE
 B BBDEC EBDEC
 C AADBD ACBCB
 D CDACC DCCEA

Tform	Qcode	Order	Raw Score	% Score	Responses	Scoring	
A	102	180	6	60	CACBD ACADB	ccccX ccXXX	
C	104	95	9	90	AADBD DCBCB	cccc Xcccc	
B	105	2	5	50	BBDCE CBDAD	cccXX XccXX	0 0
C	109	112	7	70	AADBA DCBEB	ccccX XccXc	1 1
D	112	116	7	70	CDACC DBCBB	cccc cXcXX	2 0
C	114	57	8	80	AABBD ACBCE	ccXcc ccccX	3 6
C	115	67	6	60	AAEBD DCACD	ccXcc XcXcX	4 15
A	117	7	8	80	CACBE BCCCE	ccccX Xcccc	5 13
C	120	125	7	70	AACBD DCBCD	ccXcc XcccX	6 25
D	122	20	4	40	CBECC CCADB	cXXcc XcXXX	7 34
B	124	152	7	70	BADEB CBDEC	cXccX Xcccc	8 47
A	125	69	9	90	DACBA ACCCE	Xcccc ccccc	9 25
D	127	134	10	100	CDACC DCCEA	cccc ccccc	10 24
D	128	155	10	100	CDACC DCCEA	cccc ccccc	
A	129	141	9	90	CACBA ACCCC	cccc ccccX	
A	130	133	7	70	CACBD ACCAC	ccccX cccXX	
D	131	48	10	100	CDACC DCCEA	cccc ccccc	
C	132	34	4	40	AAABD DDABE	ccXcc XXXXX	
B	134	35	10	100	BBDEC EBDEC	cccc ccccc	
B	135	80	5	50	CBBEE EBEAC	XcXcX ccXXc	
A	138	44	9	90	AACBA ACCCE	Xcccc ccccc	
D	139	166	7	70	CDECC DCCCB	ccXcc cccXX	
C	140	173	5	50	AACED ADDCD	ccXXc cXXcX	
B	141	74	4	40	EBBAB EBEDC	XcXXX ccXXc	
A	143	158	8	80	CACBE ACCEE	ccccX cccXc	
D	144	11	7	70	CDACC CCCBE	cccc XccXX	
B	146	90	8	80	BBDEB EBAEC	ccccX ccXcc	
C	150	128	4	40	EADAD CDECC	XccXc XXXcX	
B	152	153	7	70	BBDEC ABAAC	cccc XcXXc	
A	154	126	7	70	EACBA ADCDE	Xcccc cXcXc	
A	155	15	10	100	CACBA ACCCE	cccc ccccc	
B	158	14	8	80	BBDEA EBDCC	ccccX cccXc	



A	159	4	8	80	CACBA BCCCA	cccc XcccX
B	163	88	10	100	BBDEC EBDEC	cccc ccccc
D	165	172	7	70	CDAAC DCCCE	cccXc cccXX
D	171	62	3	30	CAEAC BCDDE	cXXXc XcXXX
D	172	79	10	100	CDACC DCCEA	cccc ccccc
D	174	167	9	90	CDECC DCCEA	ccXcc ccccc
D	176	131	8	80	CDACC DCCBC	cccc cccXX
A	183	182	6	60	CADBE ACCBC	ccXcX cccXX
D	184	170	3	30	EBAAC DEABC	XXcXc cXXXX
D	186	120	9	90	CDACC CCCEA	cccc Xcccc
D	190	82	8	80	CDACC DCCCE	cccc cccXX
A	192	137	8	80	CDCBA ACCCB	cXccc ccccX
C	195	156	10	100	AADBD ACBCB	cccc ccccc
B	196	154	6	60	CBDEB CBDAC	XcccX XccXc
A	199	12	7	70	EACBA ACCDC	Xcccc cccXX
B	202	63	7	70	BBCEA EBCEC	ccXcX ccXcc
D	203	83	10	100	CDACC DCCEA	cccc ccccc
B	205	132	8	80	BBDCC ABDEC	cccXc Xcccc
C	206	118	7	70	DADBD ADBCC	Xcccc cXccX
A	207	185	7	70	CADBA BCCA	ccXcc XccXc
A	212	174	9	90	CACBA ACCEE	cccc cccXc
C	213	107	10	100	AADBD ACBCB	cccc ccccc
A	217	169	6	60	CAEBA ADCBC	ccXcc cXcXX
A	218	135	10	100	CACBA ACCCE	cccc ccccc
C	219	54	6	60	CACBD ADDCB	XcXcc cXXcc
A	220	98	10	100	CACBA ACCCE	cccc ccccc
B	222	139	3	30	CBCEB DACEE	XcXcX XXXcX
D	223	73	10	100	CDACC DCCEA	cccc ccccc
A	231	145	8	80	CACBA ACCDC	cccc cccXX
D	234	101	9	90	CDACC DCCEB	cccc ccccX
D	236	102	5	50	ADACC DABAB	Xcccc cXXXX
D	239	92	10	100	CDACC DCCEA	cccc ccccc
C	240	123	8	80	AADBD ACECE	cccc ccXcX
B	241	148	5	50	CBDAD EBEEA	XccXX ccXcX
C	242	106	8	80	AAABD ACDCB	ccXcc ccXcc
B	246	143	8	80	BBDEB EBCEC	ccccX ccXcc
C	248	168	10	100	AADBD ACBCB	cccc ccccc

B	249	175	9	90	BBDEC CBDEC	cccc Xcccc
D	250	183	5	50	EDACB CCCC	XcccX XccXX
A	254	121	8	80	EACBA ACCDE	Xcccc cccXc
B	257	127	7	70	CBDEB EBEEC	XcccX ccXcc
B	262	26	7	70	BBCAC EADEC	ccXXc cXccc
A	265	157	5	50	CDCBC CCCED	cXccX XccXX
B	268	129	6	60	BDCAC ABDEC	cXXXc Xcccc
D	270	146	8	80	CDACC DCDCA	cccc ccXXc
A	271	33	8	80	CACBA ACCDA	cccc cccXX
B	275	104	8	80	EBDEC EBAEC	Xcccc ccXcc
D	276	58	7	70	DDACC CCBEA	Xcccc XcXcc
D	278	159	9	90	CDACC DCCBA	cccc cccXc
A	285	122	5	50	CADBE CCCBD	ccXcX XccXX
A	286	38	7	70	CDCBE ACCDE	cXccX cccXc
A	287	76	7	70	CACBA BCCEB	cccc XccXX
B	288	36	5	50	BBDCC ABBCC	cccXX XcXXc
C	289	94	6	60	AADBD DEACD	cccc XXXcX
C	292	165	5	50	BADDC ADBCD	XccXX cXccX
C	293	16	10	100	AADBD ACBCB	cccc ccccc
A	295	40	7	70	DACBA ACCED	Xcccc cccXX
D	296	10	9	90	CDACC DCCCA	cccc cccXc
C	297	171	7	70	DADBD ACECD	Xcccc ccXcX
A	301	56	6	60	EACBD ABCCB	XcccX cXccX
B	302	3	7	70	BBAEC CBAEC	ccXcc XcXcc
A	303	52	6	60	CACBE ABCEC	ccccX cXcXX
D	307	179	8	80	EDACC DCCEB	Xcccc ccccX
C	311	39	10	100	AADBD ACBCB	cccc ccccc
C	317	17	8	80	AADBD ACACD	cccc ccXcX
D	318	43	8	80	CDACC DCCBE	cccc cccXX
C	319	136	9	90	AADBD ACBCD	cccc ccccX
C	320	177	8	80	AADBD DCDCB	cccc XcXcc
B	321	100	5	50	ABDEB DBACC	XcccX XcXXc
D	324	186	8	80	CDBCC DCCBA	ccXcc cccXc
B	329	24	9	90	BBDEC EBEEC	cccc ccXcc
C	334	150	9	90	AAABD ACBCB	ccXcc ccccc
B	335	184	6	60	CBDEB CBEEC	XcccX XcXcc
A	337	53	8	80	CACBA DCCCC	cccc XcccX

B	340	181	7	70	BBDEE ADDEC	ccccX XXccc	
B	341	151	7	70	BBEEC CBEEC	ccXcc XcXcc	
B	342	23	10	100	BBDEC EBDEC	cccc ccccc	
D	346	147	8	80	CDACC ECCBA	cccc XccXc	
C	348	37	10	100	AADBD ACBCB	cccc ccccc	
D	349	117	5	50	EBCAC DCCDA	XXXXc cccXc	
A	354	81	7	70	CACBA ABCDB	cccc cXcXX	
D	356	114	6	60	CBECC DCCBB	cXXcc cccXX	
A	358	45	8	80	CACBA ACCDB	cccc cccXX	
D	363	93	10	100	CDACC DCCEA	cccc ccccc	
D	366	46	9	90	CDACC DCCBA	cccc cccXc	
C	368	140	8	80	AAABD ACDCB	ccXcc ccXcc	
A	371	96	10	100	CACBA ACCCE	cccc ccccc	
D	372	87	1	10	EACAB ABCAC	XXXXX XXcXX	
C	373	178	4	40	AABBC EBECA	ccXcX XXXcX	
A	374	113	4	40	AADBC CCCDD	XcXcX XccXX	
B	375	9	9	90	BBDEC EBAEC	cccc ccXcc	
B	376	149	9	90	BBDEC EBAEC	cccc ccXcc	
B	377	108	10	100	BBDEC EBDEC	cccc ccccc	
B	380	31	5	50	BBCCE ABAEC	ccXXX XcXcc	
B	385	77	9	90	BBDEC EBAEC	cccc ccXcc	
B	387	162	7	70	BBDEB ABDAC	ccccX XccXc	
A	391	28	8	80	CBCBA ACCCC	cXccc ccccX	
A	392	6	9	90	CACBA ACCDE	cccc cccXc	
A	393	119	8	80	CACBA ACCDD	cccc cccXX	
B	397	60	8	80	BBDBC EBAEC	cccXc ccXcc	
D	400	68	10	100	CDACC DCCEA	cccc ccccc	
B	401	144	6	60	BBDDA CBDEA	cccXX XcccX	
D	404	84	4	40	EDECC BCABB	XcXcc XcXXX	
B	407	142	7	70	BBDEB BBAEC	ccccX XcXcc	
D	408	109	8	70	CEACC DCCBA	cXccc cccXc	penalty
C	410	130	8	80	AADBD CCBCD	cccc XcccX	
B	412	89	8	80	BBDEE EBAEC	ccccX ccXcc	
D	413	64	4	40	CBAAB DCDBE	cXcXX ccXXX	
B	414	163	9	90	BBDEC EBAEC	cccc ccXcc	
C	416	19	8	80	AADBD ACDC	cccc ccXcX	
C	419	75	6	60	AACCD ACACD	ccXXc ccXcX	

A	420	138	8	80	CACBA ACCDD	ccccccc cccXX
B	421	13	3	30	CBBAD CBAEA	XcXXX XcXcX
B	422	1	4	40	BBCCA EBEAB	ccXXX ccXXX
D	423	27	4	40	EBBCC DCABB	XXXcc ccXXX
C	424	86	7	70	AADBD AABBD	ccccccc cXcXX
C	426	115	7	70	AADBD ADDBB	ccccccc cXXXc
C	428	103	7	70	DADBD ACBAC	Xccccccc cccXX
C	431	110	7	70	DADBD DCBCD	Xcccc XcccX
D	432	105	8	80	CBACC DCCCA	cXcccc cccXc
D	433	91	6	60	CDAAC DECBC	cccXc cXcXX
B	434	32	8	80	BBDEB EBAEC	ccccX ccXcc
C	435	187	7	70	AACED ACBCD	ccXXc ccccX
C	437	30	9	90	AADDD ACBCB	cccXc ccccc
A	439	71	6	60	EAABA ACCAB	XcXcc cccXX
C	440	25	8	80	AADED ACDCB	cccXc ccXcc
A	441	66	6	60	BDCBA BCCDE	XXccc XccXc
C	444	78	8	80	AADBD BCBCD	ccccccc XcccX
D	445	176	3	30	EECAC DDAAA	XXXXc cXXXc
C	448	51	9	90	AADBD ACECB	ccccccc ccXcc
B	450	5	10	100	BBDEC EBDEC	ccccccc ccccc
C	452	99	9	90	AADBD ACBCC	ccccccc ccccX
A	453	188	6	60	CDCBA ABCEB	cXcccc cXcXX
D	454	97	4	40	EEAEC DBCCB	XXcXc cXcXX
D	456	61	6	60	CDACC CDCBE	ccccccc XXcXX
C	464	161	8	80	AADAD CCBCB	cccXc Xcccc
A	465	55	8	80	DACBA BCCCE	Xcccc Xcccc
A	468	18	8	80	DACBA ACCCB	Xcccc ccccX
C	475	hand	4	30	ADBDD CDBCE	cXXXc XXccX penalty
B	478	21	6	60	BBCEB EBACC	ccXcX ccXXc
D	480	29	8	80	CDACC DACEB	ccccccc cXccX
B	483	59	6	60	BBDAB EBACC	cccXX ccXXc
A	488	22	6	60	CADBC ABCBE	ccXcX cXcXc
C	490	49	8	80	AADBD ACACD	ccccccc ccXcX
C	491	41	3	30	DBDEB ABDCE	XXcXX cXXcX
A	493	72	9	90	CACBA ADCCE	ccccccc cXccc
A	494	164	6	60	DACBA CCCAB	Xcccc XccXX
D	495	65	6	60	CBACC CECEB	cXcccc XXccX

D	498	160	8	80	CDACC DCCBB	cccccccX
C	500	42	4	40	AAAEC DCDCD	ccXXX XcXcX
A	244	8	4	40	CAEBC DECEB	ccXcX XXcXX
C	#N/A	47	7	70	AADBD ECACD	cccccccX
D	215	50	9	90	CDACC BCCEA	cccccccX
D	345	70	8	80	CBACC DCCED	cXccc ccccX
D	343	85	6	60	ADACC DACAB	Xcccc cXcXX
C	364	111	8	80	AADBD ACACD	cccccccX
A	274	hand	4	40	CBCEB BCCDB	cXcXX XccXX
A	279	hand	7	70	CDCDA BCCCE	cXcXc Xcccc

	n	avg	dev	min	max
Form A	46	73.9	15	40	100
Form B	46	69.1	21.1	0	100
Form C	46	74.1	17.9	30	100
Form D	50	71.8	23	10	100
Aggregate	188	72.2	19.7	0	100